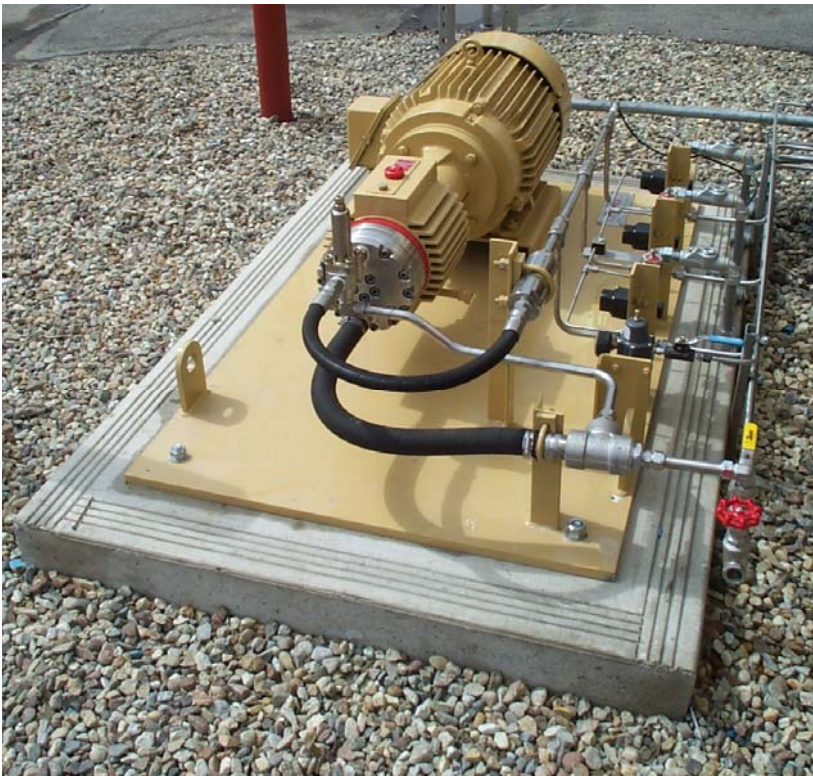


WANNER ENGINEERING INC.

Gas Turbine Inlet Fogging



When Southern California Gas Company required an inlet fogging system for their gas turbine generation plant, they chose Rotating Machinery Services, Inc. (<http://www.rotatingmachinery.com>) from Phillipsburg NJ to get the job done.

This project required a three stage fogging system. Each system consists of a grid of 150 spray nozzles operated at 1650 to 2500 psi. A single D15 was chosen to drive all three fogging grids and it is driven with a variable frequency control (Allen Bradley 70 series) with inverter duty motor to achieve the appropriate flow and operating pressure (related to droplet size).

With one circuit open, the system flows 1.54 gpm at 1647 psi and 2.04 gpm at 2500 psi to obtain the 16 to 20 micron SMD droplet size required.

With all three circuits open, the flow range is 6.27 to 8.31 gpm at 1650 to 2500 psi respectfully.

This a continuous duty application is located in a class 1 div 2 group c environment (natural gas).



Rotating Machinery Services has a "turn down map" to correspond to various operating conditions.

WANNER ENGINEERING INC.

Our scope of supply included the pump, motor, base plate and valve. The fogging water they are pumping is filtered DI water (to 0.35 microns) .

Represented by:

TPS, Inc.

34 Decatur Street

Columbia, NJ 07832

Phone: (908) 496.9020

Fax: (908) 496.8080

E-mail: inquiry@fluidproducts.com

Industrial Fluid Handling Products

- **Spray Nozzles**
- **Seal-less Pumps**
- **Industrial Filtration**
- **Air Knife Drying Systems**

<http://www.fluidproducts.com>